



# Composite | Q-Finishers



Q-finishers for efficient work on composite and optimal results.

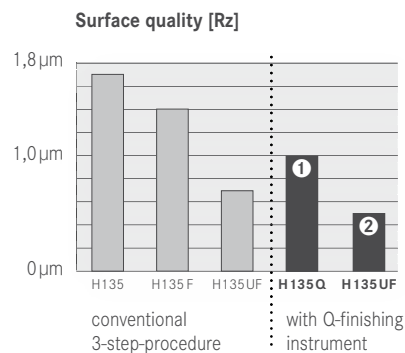
Up to now, working on composite fillings required 3 finishing steps (with normal, fine and extra-fine finishing instruments).

Due to the development of an innovative toothing, the procedure can now be reduced to just 2 steps:

- Step ①** Q-finishing instrument
- Step ②** Ultra-fine finishing instrument

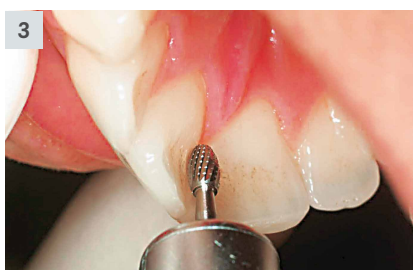
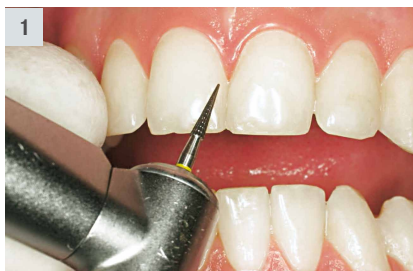
**Advantages:**

- Time saving because one step can be omitted.
- Cost saving because one instrument can be omitted.
- Already after the first finishing step a better surface quality can be achieved than previously after the second step. This is due to the cross-cut toothing which is specially designed for work on fillings.
- The tapered figures H134Q and H135Q with their smooth noncutting tip assure gentle finishing without damage to the gingiva.



**Application:**






1. H134Q.314.014, proximal.
2. H135Q.314.014, labial.
3. H379Q.314.023, palatinal.





**Recommendations for use:**

- Optimal results are achieved at  $\varnothing_{opt}$  20.000 rpm using sufficient spray coolant (min. 50 ml/min.).
- We recommend our large range of composite polishers to achieve a perfect finish.



**labial**

-  **H134Q.314.014**
-  **H135Q.314.014**
-  **H48LQ.314.012**
-  **H48XLQ.314.012** **new**
-  **H375RQ.314.016**


**palatinal**

-  **H379Q.314.018**
-  **H379Q.314.023**

**occlusal  
with cutting tip**

-  **H246Q.314.009**
-  **H390Q.314.018**

**interdental**

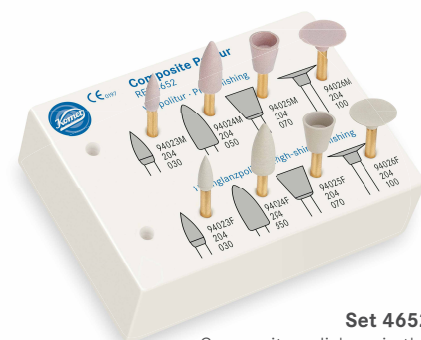
-  **H50AQ.314.010**

**Handy hint:**

For subsequent polishing, we recommend our two-step polishing system for composite:



**Set 4669**  
Spiral polishing wheels - starter set



**Set 4652**  
Composite polishers in the established shapes

